



## **Lactoferrin and Lysine Complementary feed for cats**

### **Composition**

Glycerol, milk protein powder (equal to Lactoferrin 6% w/v).

### **Additives**

*Amino acids, their salts and analogues:*

L-Lysine monohydrochloride, technically pure 250,000 mg/l.

*Flavourings.*

### **Analytical constituents**

Moisture content 70% - Crude protein 27% - Crude fibre 0% - Crude fat 0% - Crude ash 0.1%.

### **Instructions for proper use**

Shake vigorously before use.

Administer directly into the mouth or mix with food 1 ml per 2 kg bodyweight, twice a day for at least 7 days. Subsequently, halve the quantity (1 ml per 4 kg bodyweight, twice a day). If particular cases occur, it is possible to administer 1 ml per 2 kg bodyweight twice a day also for prolonged times (3 - 4 weeks).

Herp must be given as soon as the first symptoms are detected, and until they have receded. In case of chronic pathological manifestations, Herp must be administered continuously or in cycles according to the indications of the veterinary surgeon.

Both the packages are provided with graduated syringe and adapter in order to withdraw the right quantity of product.

### **Instructions for administration with the graduated syringe**

When Herp is used for the first time, open the bottle and insert the adapter into the neck of the bottle.

Once the adapter has been inserted into place, it must not be removed.

Hold the bottle in vertical position and insert the tip of the dosing syringe into the corresponding slot of the adapter. Check that the plunger is inserted all the way down into the syringe.

Turn the bottle upside down with the syringe inserted and slowly pull the plunger, letting the solution flow until the desired notch.

If too much solution has been withdrawn, turn the bottle right side up and slowly push the excess quantity back into the bottle.

Turn the bottle upright.

Extract the syringe from the adapter by rotating it.

Push the solution onto the food or into the animal's mouth.

After use, carefully rinse the syringe with cold water and leave to dry.

Close the bottle with its own cap.

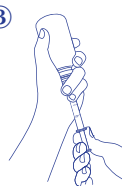
①



②



③



**Manufactured and packaged by:**

Teknofarma S.r.l.

Strada Comunale da Bertolla all'Abbadia di Stura n° 14 - 10156 Turin - Italy

Identification n. α IT 000146 TO - ABP4819PETPP3

www.teknofarma.com

**Package size**

50 ml bottle with 2 ml syringe and adapter.

120 ml bottle with 5 ml syringe and adapter.

**Keep out of reach of children and pets.**

**Keep the bottle well closed and in its box.**

**Keep at temperatures below 30°C.**

**Shelf life after first opening: 3 months.**

**Herp does not contain any colourings. Slight colour differences between batches are due to the natural origin of Lactoferrin and are not a sign of alterations.**

**Batch n. / Best before:** see the top of the box.

---

**1 ml of Herp contains:**

Milk protein powder (equal to Lactoferrin 60 mg),

Lysine hydrochloride 250 mg (equal to 200 mg of Lysine base).

**Indications**

The product is used to supplement the diet of cats subject to pathogenic pressure (such as Herpes Virus and Calici Virus carriers) with Lactoferrin and Lysine as soon as the symptoms appear, and in case of relapse.

**Properties**

Lactoferrin is a natural protein that mammals take at birth through colostrum and milk, and is physiologically present in all organic liquids (tears, saliva, bile, urine, blood, sperm, cervical mucus), i.e. where an immediate non-specific defence against the entry of infectious agents is needed.

Lactoferrin is contained in cow's milk. Herp contains a specific protein fraction of the milk, with a particularly high Lactoferrin content. Lactoferrin is combined with Lysine, whose adequate intake helps to maintain and support the animal's ability to react to difficulties caused by possible infections.